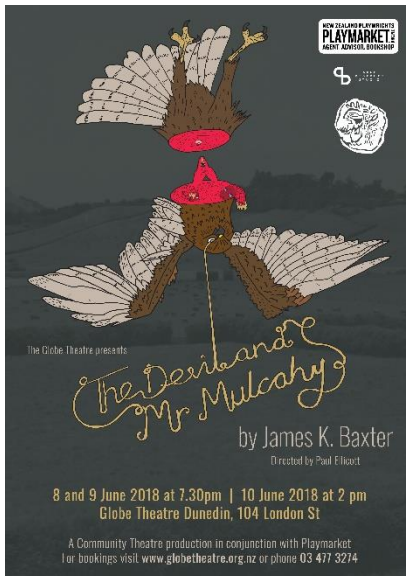


GLOBE THEATRE DUNEDIN NEWS: May 2018



the amateur theatre with the professional attitude

The Devil and Mr Mulcahy by James K Baxter



Our next production opens on Friday 8 June. Celebrated poet and playwright, Baxter was closely associated with the Globe in its early years and all his major plays premiered at the Globe between 1967 and 1969. Indeed, it can safely be said that without Patric Carey's encouragement and his belief in Baxter, these plays might never have been written, let alone performed.

But it wasn't an easy ride. When James' *The Band Rotunda* played at the Globe, one disgruntled patron declared "If you do any more of those nasty Baxter plays, I will cancel my membership". Patric replied "I will do all the plays James cares to write". Thankfully, he was as good as his word and Baxter kept on writing.

Patric and Rosalie Carey premiered this particular work at the Globe in 1967 and it was re-staged in 1991. Set in 1960s rural New Zealand this short one act piece was ground breaking drama then, and its characters and ideas are still very much of our current time: a play that combines and pits sexual desires against dogmatism which causes a family to cascade into chaos. The Globe is proud to celebrate our national and local theatre heritage with this exciting revival which is directed by Paul Ellicott.

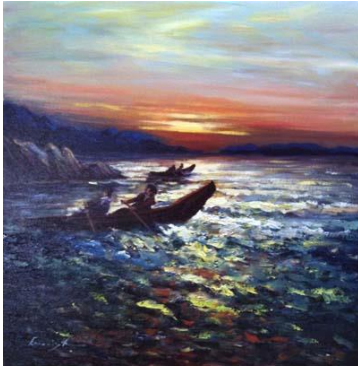
Note: Three performances only: Friday 8 June and Saturday 9 June 7.30 pm and Sunday 10 June 2.00 pm. Tickets are only \$15 and \$10 and bookings are open at www.globetheatre.org.nz. *Adult themes not suitable for children under 16 years.*

DCC Latest Arts Funding Round

We have been successful in both the Creative Communities Grant, \$1500 toward the cost of the two New Zealand plays in the current season and \$1850 from the DCC Arts Grant towards the late 2018 to mid 2019 season.

An Irish Double Bill!

The second in the winter short play series is a double bill. We are delighted to present a short work by Dunedin writer and actor Emer Lyons, *The Green*. This play, about the personal politics of a small village in modern Ireland was workshopped in 2017 at the Fortune as part of its 4x4 emerging playwright's initiative. It will be directed by Martin Swann.



The second play of the night is an early 20th century classic, John Synge's exquisite and poignant portrayal of love, loss, stoicism and tragedy, *Riders to the Sea*. This will be directed by Louise Petherbridge and it is a rare opportunity to see a work by one of Ireland's great dramatists. Make sure you come and see this.

The season runs from 29 June to 1 July.

Our children's theatre series **TOYBOX** will be on in the July School Holidays. *The Awesomenauts and other Terrific Tales*. A sci-fi inspired comic adventure created and directed by Thomas Makinson assisted by Leanne Byas. The show is punctuated with new takes on classic fairy tales, and some original yarns. Over the top, silly fun, and maybe some chocolate at the end.



SYLVIA

This will be the New Zealand premier of a work originally commissioned for the Royal Shakespeare Company, and is a dramatic presentation of the life and poetry of Sylvia Plath. It is arranged by Barry Kyle and directed by Perry Spicer. The production will be on stage for a three night season on 27, 28 and 29 July.